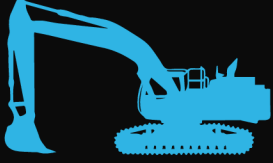




BIG BAD MAT



Rugged

Withstands Up To 200 tons



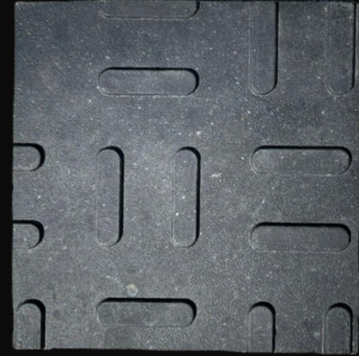
Traction

Maximum Grip For Equipment & Crewman



Flexible

Conforms To Uneven Ground



Model Size

6'7" x 13'2" x 1.91"

2000mm x 4000mm x 48.4mm

Total Thickness:

1.5" mat + .41" combined tread

Weight

700 lbs

Color

Black or Beige

Material

Ultra High Molecular Weight Polyethylene (UHMWPE)

Weight Loading

200 Tons for Virgin Beige And
150 Tons For Recycled Black,
Depending On Subsurface
Conditions

Flammability Resistance

UL94HB

Connections

2 Way Connectors Available

Shipping Info

U.S. Standard 48ft flatbed
truck: 65 mats